

14151 174th PI NE, Redmond

\$1,450,000

COVENTRY NEIGHBORHOOD



Complete details, photos, 3D tour, 4K video tour and Pre-Inspection at:

EnglishHillHome.net


2025
FIVE STAR
REAL ESTATE AGENT

Tony Meier

2008 • 2010 • 2011 • 2013 • 2014
2015 • 2016 • 2017 • 2018 • 2019
2020 • 2021 • 2022 • 2023 • 2024 • 2025



Tony Meier & Team
— 37 Years of Helping Buyers & Sellers Succeed! —

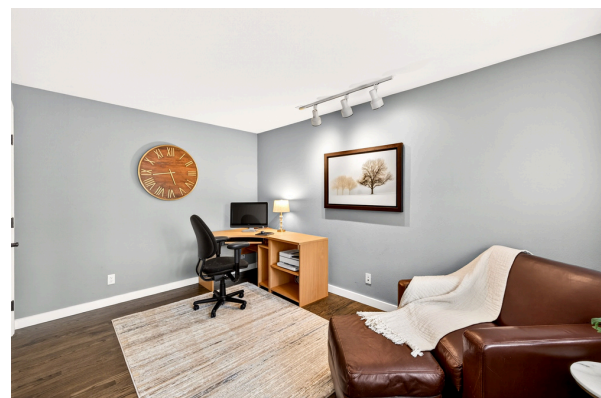
www.EastsideHomes.com

425-466-1000



Windermere
REAL ESTATE







Coventry's Best - Updated, Private, and Move-In Ready

Welcome to one of Coventry's most beautifully updated homes nestled in the heart of English Hill on a generous 11,257 SF lot. A sweeping concrete driveway, lush manicured lawn, brick accent detailing, artisan-glass front entry, and a classic two-story silhouette framed by soaring evergreens set the stage for what's waiting inside across 2,390 SF of well-designed living space.

Welcoming foyer anchored by a striking staircase with dark hardwood treads and iron balusters, rich updated hardwood floors, and a layout that flows naturally from the formal living room through to the dining room and into the heart of the home. The updated kitchen featuring shaker cabinetry with glass-front display uppers, quartz countertops, stainless appliances, subway tile backsplash, and a wraparound window overlooking the backyard tree canopy. The island with seating provides style, functional prep space, and a space for informal entertaining. A charming built-in breakfast nook with bay windows brings the outdoors in and adds a warm, casual dining option that perfectly complements the formal dining room just steps away. The vaulted family room, anchored by a classic brick fireplace, opens directly to the updated back deck through sliding glass doors. A main-level bedroom/den with hardwood floors and track lighting adds valuable flexibility for a home office, guest room, or creative space. The updated laundry room with white shaker cabinetry, subway tile backsplash, utility sink, and direct garage access rounds out a main level designed for how people actually live.

The primary suite is a true retreat — generously sized with plush carpet, a ceiling fan, a vaulted sitting area with a dramatic arched window framing lush treetop views, a walk-in closet with custom wood built-ins, and a luxuriously updated primary bath designed for total relaxation. The bath features a skylight, heated floors, dual-sink vanity with marble countertops, shiplap accent wall, a freestanding soaking tub, and a floor-to-ceiling subway tile shower with dual showerheads and a herringbone mosaic niche. Two additional bedrooms and a full hall bath with a bold vanity complete the upper level.

Outside, the multi-level deck — freshly stained with updated planks — overlooks a fully fenced backyard with mature garden plantings, a paver patio, a built-in stone fire pit with curved seat wall, a detached storage shed, and a private, tree-canopied setting that feels worlds away from the pace of the Eastside. A portable generator adds the kind of year-round peace of mind that Pacific Northwest homeowners genuinely value. Located in the award-winning Northshore School District, within walking distance of Sunrise Elementary, and minutes from Microsoft, Google, and major Eastside employment corridors.



VIEW PROPERTY DETAILS ON YOUR PHONE

Type Website or Scan the QR Code to gain instant access

Property Details | Property Disclosures | Pre-Inspection Report
Additional Photos | 3D Walkthrough | Video Tour



Home Features

Sizes and dimensions are approximate, actual may vary.

Bedrooms 4 | Baths 2.5 | 2,390 Square Feet | 11,257 Sq. Ft. Lot

Bedroom Information

- # of Bedrooms: 4
- # of Beds (Upper): 3
- # of Beds (Main): 1

Bathroom Information

- # of Baths (Total): 2.5
- # of Full Baths (Upper): 2
- # of Half Baths (Main): 1

Parking Information

- Garage: Attached
- Garage Spaces: 2 with Extra Storage

Utility Information

- Water Source: Public
- Water Company: Woodinville Water District
- Sewer: Sewer Connected
- Sewer Company: Woodinville Water District
- Garbage Company: Waste Management
- Power Company: Puget Sound Energy
- Cable/TV Provider: xFinity
- Internet Service Provider: xFinity/Ziplay

School Information

- District: Northshore
- Elementary: Sunrise
- Middle: Timbercrest
- High: Woodinville

Interior Features

- # of Fireplaces: 1
- Fireplace Features: Gas
- Flooring: Ceramic Tile, Hardwood, Vinyl Plank, Wall to Wall Carpet

Exterior Features

- Year Built: 1986
- Style Code: Two Story
- Roof: Composition
- Energy Source: Natural Gas
- Heating Information: Forced Air
- Portable Generator with Transfer Panel

Tax Information

- Tax Annual Amount: \$14,077.00
- Tax Year: 2026
- Senior Exemption: No

HOA Information

- Has HOA
- Association Contact: EnglishHill.org
- Association Fee: \$210
- Association Fee Frequency: Annually
- Association Fee Includes: Common Area Maintenance

Community Information

- Community Features: Athletic Court, CCRs, Trails